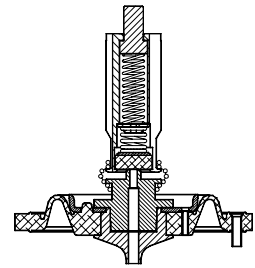
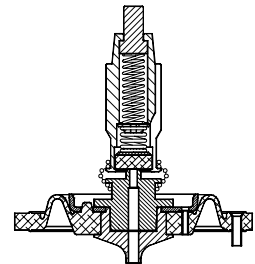


Gruppo membrana completo 2/2 NC servoazionata trainata

CODICE	TENUTA	SERIE VALVOLA
13428010	NBR	E108C E108D
13428040	EPDM	
13428020	FPM	
13429010	NBR	E108E
13429040	EPDM	
13429020	FPM	
13430010	NBR	E108F
13430040	EPDM	
13430020	FPM	

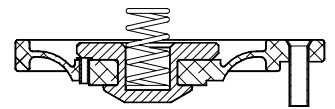


CODICE	TENUTA	SERIE VALVOLA
13431010	NBR	D108E
13431040	EPDM	
13431020	FPM	
13432010	NBR	D108F
13432040	EPDM	
13432020	FPM	

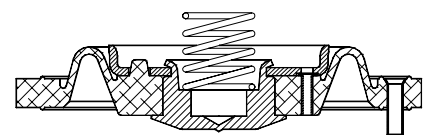


Gruppo membrana completo 2/2 NC e NA servoazionata

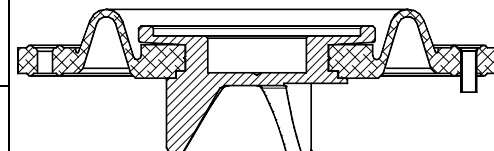
CODICE	TENUTA	SERIE VALVOLA
11030010	NBR	107B...10
11030040	EPDM	107C...10
11030020	FPM	207B...10 207C...10



13386010	NBR	107C...12
13386040	EPDM	107D...12
13386020	FPM	207C...12 207D...12
13395010	NBR	107E
13395040	EPDM	207E
13395020	FPM	
13402010	NBR	107F
13402040	EPDM	207F
13402020	FPM	

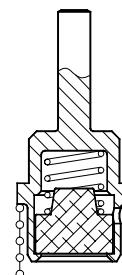


11266010	NBR	107G
11266040	EPDM	107H
11266020	FPM	207G 207H
11267010	NBR	107I
11267040	EPDM	207I
11267020	FPM	
12669010	NBR	107M 107R 207M 207R
13744010	NBR	107M.../W 107R.../W 207M.../W 207R.../W



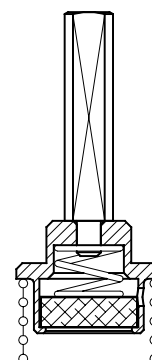
Otturatore completo 2/2 NA per tubo Ø10

CODICE		TENUTA	SERIE VALVOLA	
OTTONE	INOX		OTTONE	INOX
11166010	12104010	NBR EPDM FPM	205A	277C 277D 277E 277F
11166040	12104040		207C	
11166020	12104020		207D	
			207E	
			207F	
			212X	
		216X		
		218C		
		218D		



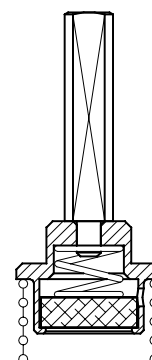
Otturatore completo 2/2 NA per tubo Ø13 (versioni in corrente alternata)

CODICE		TENUTA	SERIE VALVOLA	
OTTONE	INOX		OTTONE	INOX
11167010 11167040 11167020	12916010 12916040 12916020	NBR EPDM FPM	E206...15	210...15 210...20 210...25
			E206...20	
			E206...25	
			207G	
			207H	
			207I	
			207M	
			207R	
			E214X...15	
			E214X...20	
			E214X...25	
			219C...	
			219D...	
11176010 11176040 11176020	12003010 12003040 12003020	NBR EPDM FPM	E206...35	E210...35 E210...45 E210...52
			E206...45	
			E206...52	
			E214X...35	
			E214X...45	
207M.../W				
207R.../W				
12430010 12430040 12430020	13130010 13130040 13130020	NBR EPDM FPM	206...64	210...64



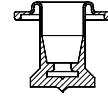
Otturatore completo 2/2 NA per tubo Ø13 (versioni in corrente continua)

CODICE		TENUTA	SERIE VALVOLA	
OTTONE	INOX		OTTONE	INOX
13754010 13754020 13754040	12916010 12916040 12916020	NBR EPDM FPM	D206...15/3	D210...15 D210...20 D210...25
			D206...20/3	
			D206...25/3	
			D214X...15/5	
			D214X...20/5	
			D214X...25/5	
13755010 13755020 13755040	13756010 13756020 13756040	NBR EPDM FPM	D206...35/3	D210...35/3 D210...45/3 D210...52/3
			D206...45/3	
			D206...52/3	
			D214X...35/5	
			D214X...45/5	

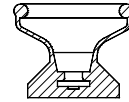


Membrana valvola 2/2 NC a separazione di fluido

CODICE	TENUTA	SERIE VALVOLA
10402030	SILICONE	150

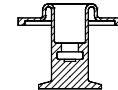


CODICE	TENUTA	SERIE VALVOLA
11315030	SILICONE	160 161



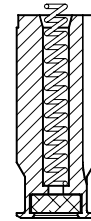
Membrana valvola deviatrice a separazione di fluido

CODICE	TENUTA	SERIE VALVOLA
10644010	NBR	330



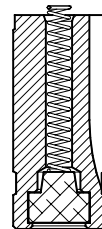
Gruppo nucleo mobile completo Ø6.35 2/2 NC

CODICE	TENUTA	SERIE VALVOLA
1046301A	NBR	121
1046304A	EPDM	
1046302A	FPM	



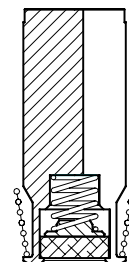
Gruppo nucleo mobile completo Ø9 2/2 NC

CODICE	TENUTA	SERIE VALVOLA
11799010	NBR	105
11799040	EPDM	135
11799020	FPM	107C – 107D – 107E – 107F
11799090	NBR DVGW	111
11799340	EPDM WRC	112
		116
*11800010	NBR	118
*11800040	EPDM	510
*11800020	FPM	512
*11800090	NBR DVGW	*105/135 (solo Ø4)
*11800340	EPDM WRC	



Gruppo nucleo mobile completo Ø11.85 2/2 NC fino a DN5.2

CODICE	TENUTA	SERIE VALVOLA
10120010	NBR	106A – 106B – 106C – 106D
10120040	EPDM	107G – 107H – 107I
10120020	FPM	114X
10120050	PTFE	119C – 119D
		610
10120N10	NBR	110B – 110C – 110D
10120N40	EPDM	
10120N20	FPM	



Gruppo nucleo mobile completo Ø11.85 2/2 NC DN6.4

CODICE	TENUTA	SERIE VALVOLA
11035010	NBR	106B – 106C – 106D
11035040	EPDM	
11035020	FPM	110B – 110C – 110D
12004050	PTFE	

