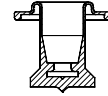
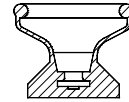


Membrana valvola 2/2 NC a separazione di fluido

CODICE	TENUTA	SERIE VALVOLA
10402030	SILICONE	150

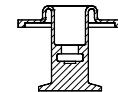


CODICE	TENUTA	SERIE VALVOLA
11315030	SILICONE	160 161



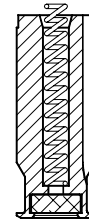
Membrana valvola deviatrice a separazione di fluido

CODICE	TENUTA	SERIE VALVOLA
10644010	NBR	330



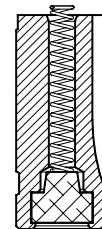
Gruppo nucleo mobile completo Ø6.35 2/2 NC

CODICE	TENUTA	SERIE VALVOLA
1046301A	NBR	121
1046304A	EPDM	
1046302A	FPM	



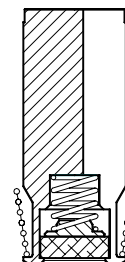
Gruppo nucleo mobile completo Ø9 2/2 NC

CODICE	TENUTA	SERIE VALVOLA
11799010	NBR	105
11799040	EPDM	135
11799020	FPM	107C – 107D – 107E – 107F
11799090	NBR DVGW	111
11799340	EPDM WRC	112
		116
*11800010	NBR	118
*11800040	EPDM	510
*11800020	FPM	512
*11800090	NBR DVGW	*105/135 (solo Ø4)
*11800340	EPDM WRC	



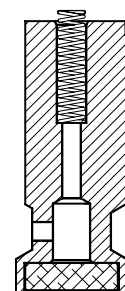
Gruppo nucleo mobile completo Ø11.85 2/2 NC fino a DN5.2

CODICE	TENUTA	SERIE VALVOLA
10120010	NBR	106A – 106B – 106C – 106D
10120040	EPDM	107G – 107H – 107I
10120020	FPM	114X
10120050	PTFE	119C – 119D
		610
10120N10	NBR	110B – 110C – 110D
10120N40	EPDM	
10120N20	FPM	



Gruppo nucleo mobile completo Ø11.85 2/2 NC DN6.4

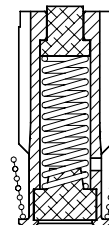
CODICE	TENUTA	SERIE VALVOLA
11035010	NBR	106B – 106C – 106D
11035040	EPDM	
11035020	FPM	110B – 110C – 110D
12004050	PTFE	



Nucleo mobile completo Ø9 3/2 NC

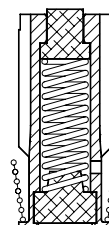
CODICE	TENUTA	SERIE VALVOLA
10492010	NBR	305A DN1,2
10492040	EPDM	311A DN1,2
10492020	FPM	312X DN1,2

10519010	NBR	218B
10519040	EPDM	305A
10519020	FPM	335
		311A
		312X
		316X
		530
		532



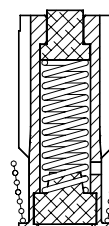
Nucleo mobile completo Ø9 3/2 NA (alimentazione dal nucleo fisso)

CODICE	TENUTA	SERIE VALVOLA
11289010	NBR	305A
11289040	EPDM	311A
11289020	FPM	312X



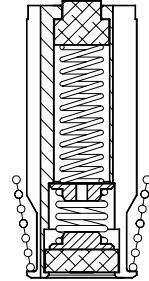
Nucleo mobile completo Ø9 3/2 Servizio Generale NC e NA

CODICE	TENUTA	SERIE VALVOLA
11289010	NBR	305A
11289040	EPDM	311A
11289020	FPM	312X
		316X



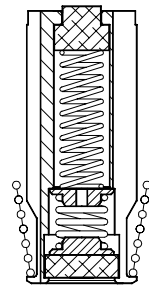
Nucleo mobile completo Ø11.85 3/2 NC

CODICE	TENUTA	SERIE VALVOLA
10966010	NBR	203A
10966040	EPDM	306A
10966020	FPM	306B
		314X
		630
10966N10	NBR	310B
10966N40	EPDM	310C
10966N20	FPM	310D



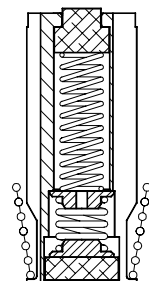
Nucleo mobile completo Ø11.85 3/2 NA (alimentazione dal nucleo fisso)

CODICE	TENUTA	SERIE VALVOLA
11045010	NBR	306A
11045040	EPDM	306B
11045020	FPM	314X
11045N10	NBR	310B
11045N40	EPDM	310C
11045N20	FPM	310D



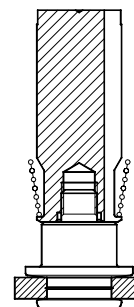
Nucleo mobile completo Ø11.85 3/2 Servizio Generale NC e NA

CODICE	TENUTA	SERIE VALVOLA
11044010	NBR	306A
11044040	EPDM	306B
11044020	FPM	314X
11044N10	NBR	310B
11044N40	EPDM	310C
11044N20	FPM	310D



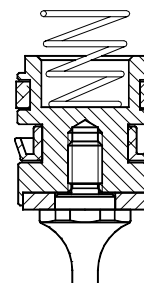
Nucleo mobile completo Ø11.85 2/2 NC

CODICE	TENUTA	SERIE VALVOLA
10343010	NBR	109C 109D
10343040	EPDM	
10343020	FPM	
10344010	NBR	109E
10344040	EPDM	
10344020	FPM	



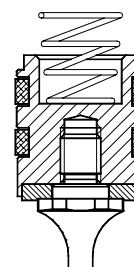
Pistone completo 2/2 NC e NA

CODICE	TENUTA	SERIE VALVOLA
12735000	FPM / PTFE	118C
		118D
		119C
		119D
		218C
		218D
		219C 219D



Pistone completo 2/2 NC per vapore

CODICE	TENUTA	SERIE VALVOLA
11910000	PTFE	119W



Pistone completo 2/2 NC per 118-119 G1/4"

CODICE	TENUTA	SERIE VALVOLA
11909000	PTFE	118B 119B

