

**DESCRIPTION**

Solenoid valve 3 way  
direct acting poppet type

**CONSTRUCTION**

Body Acetal copolymer  
Internal parts Acetal copolymer - Stainless steel  
Seal material NBR



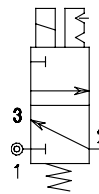
**FEATURES**

Fixing method: M3 screws  
max torque 0,5Nm

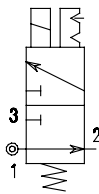
Universal mounting position

Fluid temperature: +50°C max  
Ambient temperature: -15°C +50°C  
Fluid: Air, neutral gases  
Response time: 10-15ms  
Manual override: Enclosed bi-stable function

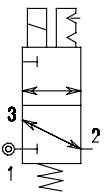
3/2NC



3/2NA



3/2U

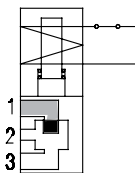
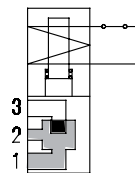
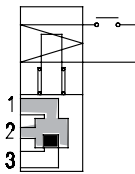
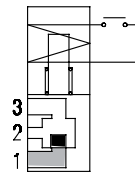


**3**

**ELECTRICAL OPERATING FEATURES**

Duty cycle: ED100%  
Insulation class: F (+155°C)  
Voltage tolerance: ±10%  
Protection class: Cables IP65  
Fast-on IP00, with connector fitted IP65

Electrical connection: Cables (L=300mm)  
AMP 2.8x0.5  
DIN 43650C



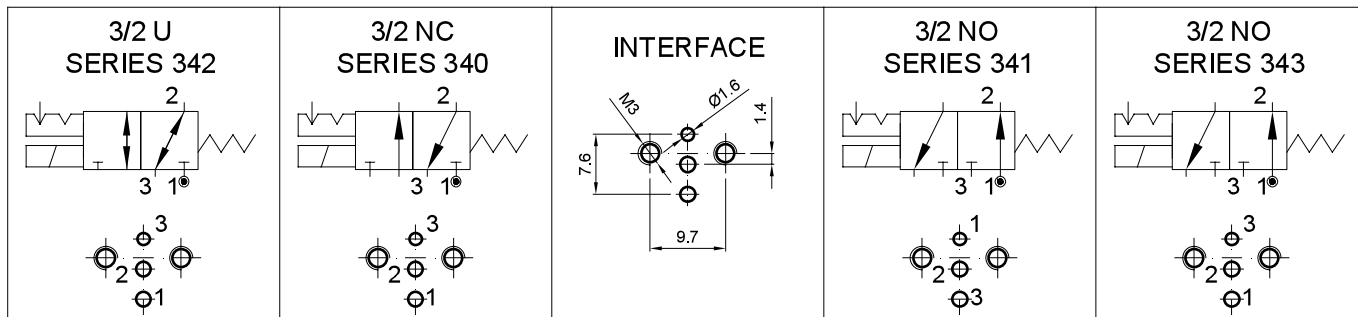
Connection	Orifice mm		Nominal rate NI/1'	Differential pressure bar		Nominal power			CODE	
	1→2	2→3		Min	Max	AC Inrush	VA Holding	DC Watt	Alternating current	Direct current
<b>NC Normally closed</b>										
Flange	0.8	0.9	23	0	10	-	-	1.5	E340XB08	D340XB08
	1.2	1.3	29	0	10	3.6	2.5	2.5	E340XB12	D340XB12
	1.5	1.6	43	0	6	3.6	2.5	2.5	E340XB15	D340XB15
<b>NO Normally open</b>										
Flange	1	1.2	26	0	8	3.6	2.5	2.5	E341XB10	D341XB10
	1	1.2	26	0	8	3.6	2.5	2.5	E343XB10	D343XB10
<b>U Universal</b>										
Flange	1.5	1.6	43	0	2.5	3.6	2.5	2.5	E342XB15	D342XB15

**COIL CODE**

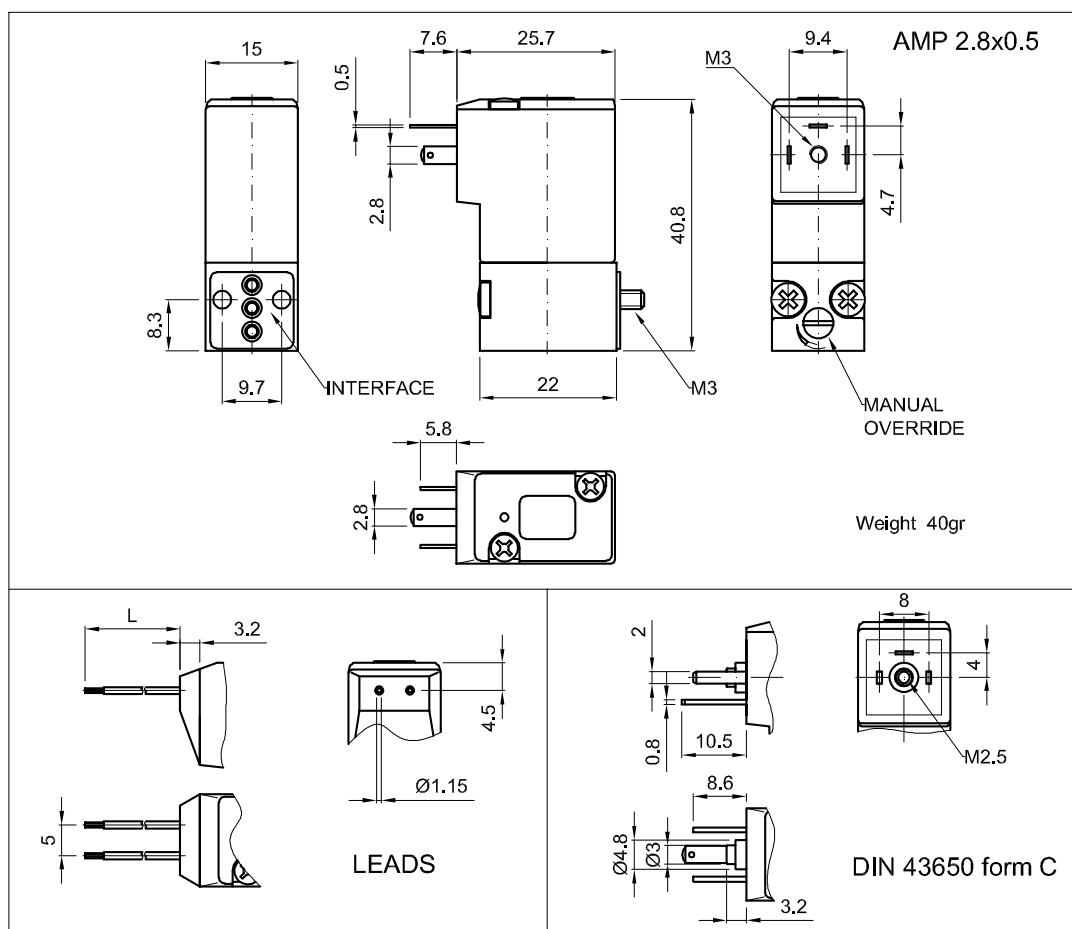
VOLTAGE	AMP 2.8x0.5			DIN 43650 form C			CABLE		
	50/60Hz	1.5W DC	2.5W DC	50/60Hz	1.5W DC	2.5W DC	50/60Hz	1.5W DC	2.5W DC
12	-	106970	106950	-	109020	109040	-	107010	106990
24	107030	106980	106960	108990	109030	109050	107040	107020	107000
110	107060	-	-	109000	-	-	-	-	-
220/230	107050	-	-	109010	-	-	-	-	-

P.S. 1,5W power available on Ø0.8 orifice only.

### CONNECTIONS



### OVERALL DIMENSION



### TYPE NUMBER COMPOSITION

