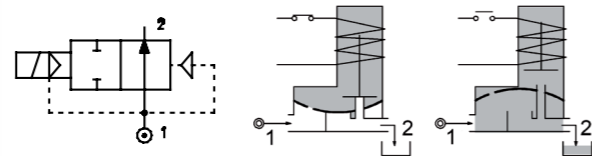
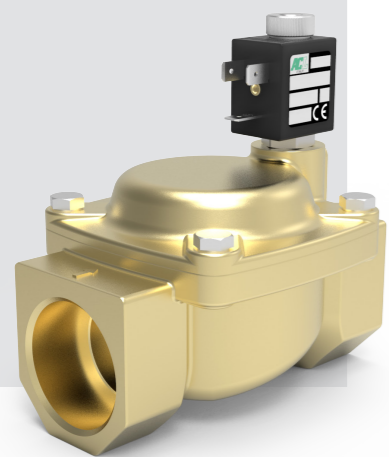
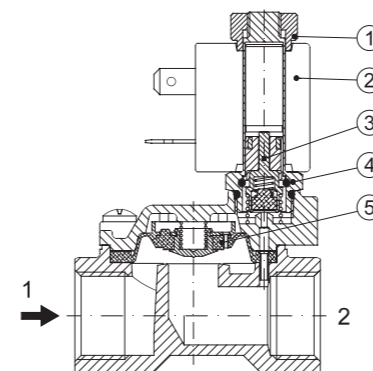


SERIES 207

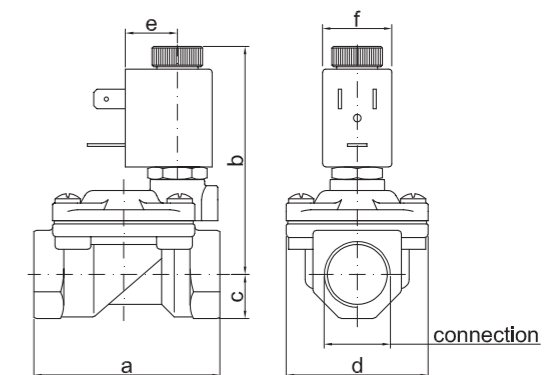
Solenoid valve 2 way normally open with servo-assisted diaphragm



SPARE PARTS LIST



OVERALL DIMENSION



CONSTRUCTION

BODY AND COVER	Brass - Low Lead Brass NSF 61
ARMATURE TUBE	AISI 303
PLUNGER AND CORE	AISI 430FR
SPRINGS	AISI 302
SEAL MATERIAL	NBR - FPM - EPDM

FEATURES

Minimum differential pressure 0.15bar
Maximum allowable pressure PS 25bar ^④
Maximum fluid viscosity 25cSt (mm ² /s)
Ambient temperature: from -10°C to +80°C according to the coil
Preferred mounting position with vertical coil above

CODE ① ②	CONNECTION G ISO 228	ORIFICE [mm]	KV m ³ /h	DIFFERENTIAL PRESSURE [bar]		NOMINAL POWER			COIL		SEAL ①	TEMP. RANGE [°C]	
				MIN.	MAX.	AC	VA	DC	SERIES	WIDTH			
													AC
E207B...10///...	1/4"	10	1.5	0.15	15	15							
E207C...10///...	3/8"	10	1.7	0.15	15	15					NBR=B	-10 +90	
E207C...12///...	3/8"	12	2.2	0.15	15	15							
E207D...12///...	1/2"	12	2.5	0.15	15	15	12	8	6.5	3	22	EPDM=E EPDM=M ⑤	-10 +140
E207E...18///...	3/4"	18	5.5	0.15	13	13							
E207F...25///...	1"	25	10.2	0.15	10	10						FPM=V	-10 +140
E207G...30///...	1" 1/4	30	15	0.15	10	10							
④E207C...12/W/...	3/8"	12	2.2	0.5	15	15							
④E207D...12/W/...	1/2"	12	2.5	0.5	15	15	12	8	6.5	3	22	NBR=B	-10 +90

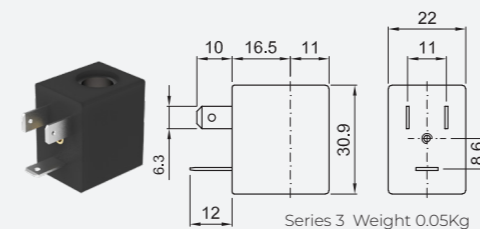
① Seal
 ② Coil
 ③ Reinforced diaphragm
 ④ The maximum allowable pressure PS for steam 2,5bar (gauge pressure)
 ⑤ EPMD certified WRAS

Example: E207DB12///301 NBR seal
 Coil 24V DC

OPTIONS

UL certified coils
Electroless nickel plating
Series 7 explosion proof coil according to ATEX - EExmI

COILS ②	ALTERNATING CURRENT 50/60Hz (V)								DIRECT CURRENT (V)			ELECTRICAL CONNECTION	CONNECTORS					
	12	24	48	110	120	220 230	240	380	12	24	48							
Series 3 Width 22	30A	30B	U35B	30C	30D	U35D	30E	V32E	30F	U35F	30G	300	U350	301	U351	302	DIN 46244	PG9 CODE 10348000



DESCRIPTION
 Class F insulation
 Voltage tolerance
 AC +15% -10%
 DC ± 10%
 Protection class
 IP65 with connector fitted
 IP00 without connector
 Continuous service ED100%

OPTIONS
 Class H insulation (series 2)
 Cable attached
 Special coil voltage
 Special coil powers
 UL certified coils
 (for coil details see section 8)