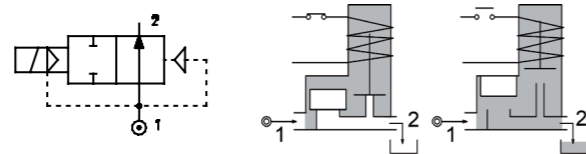
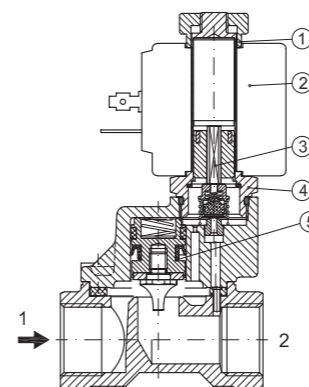


SERIES 219

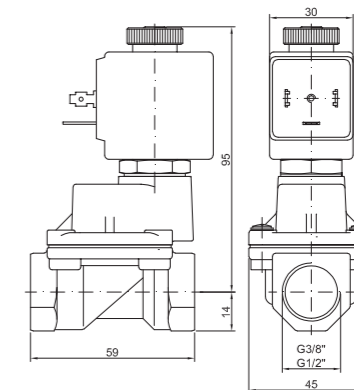
Solenoid valve 2 way normally closed with servo-assisted diaphragm



SPARE PARTS LIST



OVERALL DIMENSION



CONSTRUCTION

BODY AND COVER	Brass
ARMATURE TUBE	Brass
PLUNGER AND CORE	AISI 430FR
SPRINGS	AISI 302
PISTON	Brass
PISTON SEAL	PTFE reinforced
SEAL MATERIAL	NBR - FPM - EPDM

FEATURES

Minimum differential pressure 1bar
Maximum allowable pressure PS 40bar [Ⓜ]
Maximum fluid viscosity 25cSt (mm ² /s)
Ambient temperature: from -10°C to +80°C according to the coil
Preferred mounting position with vertical coil above

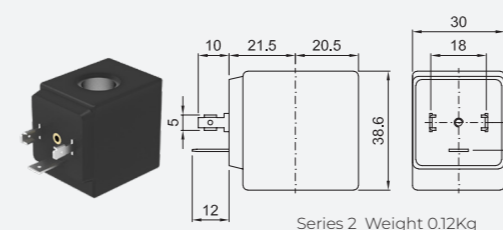
CODE	CONNECTION G ISO 228	ORIFICE [mm]	KV m ³ /h	DIFFERENTIAL PRESSURE [bar]		NOMINAL POWER			COIL		SEAL	TEMP. RANGE [°C]	
				MIN.	MAX.	AC INRUSH	VA HOLDING	DC WATT	SERIES	WIDTH			
													AC
E219CV12///...	3/8"	12	2	1	25	25	20	15	10	2	30	PTFE/ FPM	-10 +140
E219DV12///...	1/2"	12	2.2	1	25	25							

Ⓛ Seal
 Example: E219DV12///201 FPM seal
 Coil 24V DC
 Maximum allowable leakage <0.2NI/h
 Ⓜ The maximum allowable pressure PS for steam 2,5bar (gauge pressure)

OPTIONS

UL certified coils
Electroless nickel plating
Stainless steel armature tube

COILS	ALTERNATING CURRENT 50/60Hz (V)								DIRECT CURRENT (V)			ELECTRICAL CONNECTION	CONNECTORS				
	12	24	48	110	120	220 230	240	380	12	24	48						
Series 2 Width 30	20A	20B	U25B	20C	20D	U25D	20E	20F	U25F	20G	200	U250	201	U251	202	DIN 43650A	PG9 CODE 10349000



DESCRIPTION
 Insulation class
 Series 2 =F Series 5=H
 Voltage tolerance
 AC +15% -10%
 DC ± 10%
 Protection class
 IP65 with connector fitted
 IP00 without connector

OPTIONS
 Class H insulation
 Cable attached
 Special coil voltage
 Special coil powers
 UL certified coils
 (for coil details see section 8)