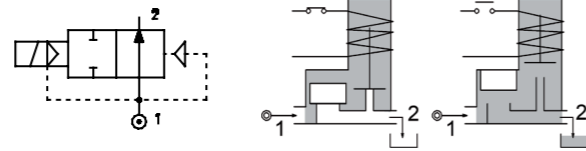
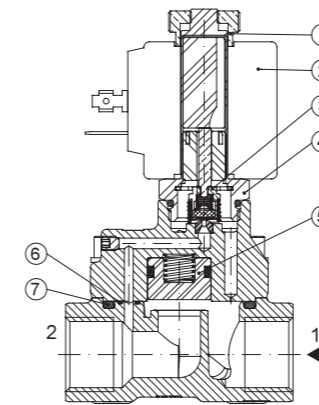


SERIES 224

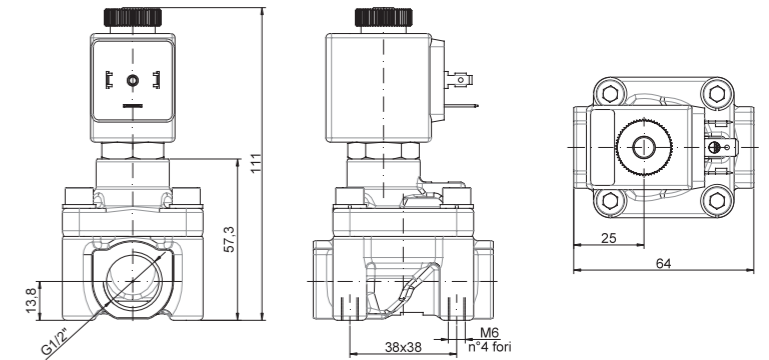
Solenoid valve 2 way normally closed with servo-assisted diaphragm



SPARE PARTS LIST



OVERALL DIMENSION



CONSTRUCTION

BODY AND COVER	Brass
ARMATURE TUBE	AISI 303
PLUNGER AND CORE	AISI 430FR
SPRINGS	Stainless steel
PISTON	PBT
SEAL MATERIAL	main seal PTFE other FPM

FEATURES

Minimum differential pressure 3bar
Maximum allowable pressure PS 100bar
Maximum fluid viscosity 12cSt (mm2/s)
Ambient temperature: from -10°C to +80°C according to the coil
Preferred mounting position with vertical coil above

CODE	CONNECTION G ISO 228	ORIFICE [mm]	KV m3/h	DIFFERENTIAL PRESSURE [bar]		NOMINAL POWER			COIL		SEAL	TEMP. RANGE [°C]	
				MIN.	MAX.	AC	VA	DC	SERIES	WIDTH			
													AC
E224DW12///...	1/2"	12	60	3	50	50	20	15	10	2	30	PTFE=W	-10 +95

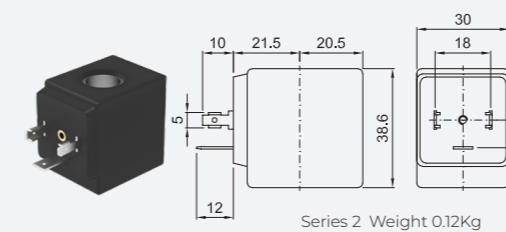
⊗ Coil
Maximum allowable leakage <0.2NI/h

Example: E224DW12///20E PTFE seal
Coil 220-230V 50-60Hz

OPTIONS

- ATEX certified coils
- Electroless nickel plating

COILS	ALTERNATING CURRENT 50/60Hz (V)								DIRECT CURRENT (V)			ELECTRICAL CONNECTION	CONNECTORS				
	12	24	48	110	120	220 230	240	380	12	24	48						
Series 2 Width 30	20A	20B	U25B	20C	20D	U25D	20E	20F	U25F	20G	200	U250	201	U251	202	DIN 43650A	PG9 CODE 10349000



DESCRIPTION
Insulation class
Series 2 = F Series 5 = H
Voltage tolerance
AC +15% -10%
DC ± 10%
Protection class
IP65 with connector fitted
IP00 without connector

OPTIONS
Class H insulation
Cable attached
Special coil voltage
Special coil powers
ATEX certified coils
(for coil details see section 8)