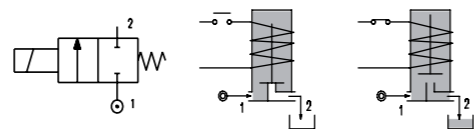
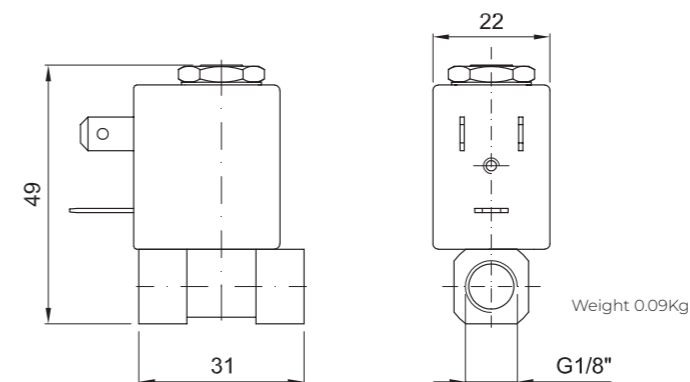


# SERIES W105

Solenoid valve 2 way normally closed direct acting poppet type.



## OVERALL DIMENSION



Weight 0.09Kg



### CONSTRUCTION

BODY	Brass
ARMATURE TUBE	Brass
PLUNGER AND CORE	EN 1.4106
SPRINGS	EN 1.4310
SEAL MATERIAL	FPM

### FEATURES

Maximum allowable pressure PS 50bar
Maximum fluid viscosity 20 cSt (mm <sup>2</sup> /s)
Ambient temperature: from -10°C to +80°C according to the coil
Universal mounting position

CODE	CONNECTION G ISO 228	ORIFICE [mm]	KV m <sup>3</sup> /h	DIFFERENTIAL PRESSURE [bar]			NOMINAL POWER			COIL		SEAL	TEMP. RANGE [°C]
				MIN.	MAX.		AC INRUSH	VA HOLDING	DC WATT	SERIES	WIDTH		
					AC	DC							
W105AV15//...	1/8"	1.5	0.06	0	14	3	12	8	6.5	3	22	FPM=V	-10 +140

COILS ③	ALTERNATING CURRENT 50/60Hz (V)							DIRECT CURRENT (V)			ELECTRICAL CONNECTION	CONNECTORS
	12	24	48	110	220 230	240	380	12	24	48		
Series 3 Width 22	30A	30B	30C	30D	30E	30F	30G	300	301	302	DIN 46244	PG9 CODE 10348000

#### DESCRIPTION

Class H insulation  
Voltage tolerance  
AC +6% -15%  
DC +10% -5%  
Protection class  
IP65 with connector fitted  
IP00 without connector  
Continuous service ED100%

#### OPTIONS

Special coil voltage  
Special coil powers

③ Coil

Series W105 can be provided only with coil mounted.  
Please refer to next page for coil codes.