

DESCRIPTION

Solenoid valve 2 way normally open direct acting poppet type.

With explosion proof coil certified for hazardous area:

ATEX II 2GDEx d IIC T6 or T5 or T4 Gb

Ex tb IIC T80°C or T95°C or T130°C Db IP66

Tamb -40°C ÷ +35°C(T6) or +50°C(T5) or +60°C(T4)

CESI 03 ATEX 344 Extension No. 01/12

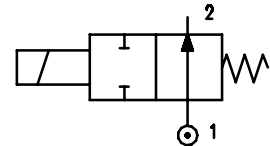
(other certifications e.g.EAC, INMETRO, CCOE etc. on request)



2

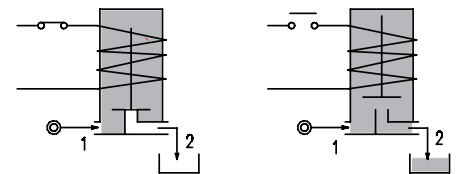
VALVE CONSTRUCTION

Body	Brass
Seal assembly	Brass
Core and plunger	AISI 430FR
Springs	AISI 302
Armature tube	AISI 316
Seal material	NBR - FPM - EPDM



EXPLOSION PROOF COIL CONSTRUCTION

Housing	Red colour alloy (painted with epoxy powder)
Electrical connection	1/2" NPT (M20x1.5 on request)



FEATURES

- Maximum allowable pressure PS 100bar
- Maximum fluid viscosity 25cSt (mm²/s)
- Ambient temperature: -40°C ÷ +35°C(T6), +50°C(T5), +60°C(T4)
- Mounting position with vertical coil above

- OPTIONS:**
- Stainless steel coil housing (see coil X6 section 8)
 - Electroless nickel plating
 - Stainless steel seat insert (up to Ø4.5)
 - Manual override

NOTE: The solenoid valve is suitable only with media that are **NOT** potentially explosive

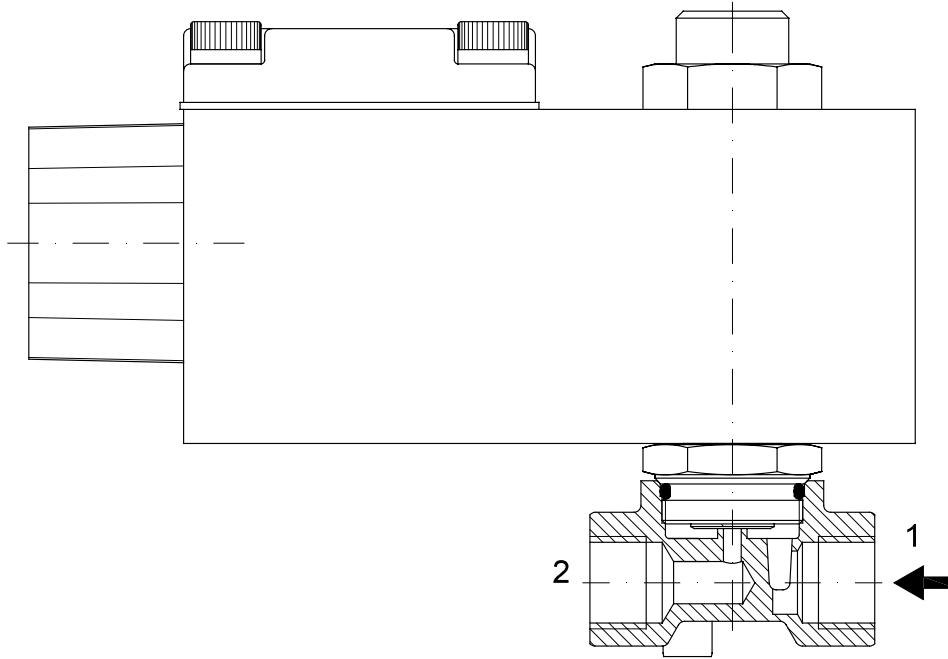
CODE ① ② ③	Connection G ISO 228	Orifice mm	Kv m ³ /h	Differential pressure bar			Nominal power		Coil series	Seal	Temp. range °C
				Min	Max		AC Holding	DC			
					AC	DC					
A206... ..15///...	1/8" 1/4"	1.5	0.07	0	23	23	12 VA	8W	A6	NBR=B EPDM=E FPM=V	-10 +80
A206... ..20///...		2	0.1	0	17	17					
A206... ..25///...		2.5	0.15	0	12	12					
A206... ..30///...		3	0.25	0	9	9					
A206... ..35///...		3.5	0.32	0	7	7					
A206... ..40///...		4	0.36	0	5.5	5.5					
A206... ..45///...		4.5	0.41	0	4.5	4.5					
A206... ..52///...		5.2	0.47	0	3	3					

- ① Connection: A=1/8" , B=1/4"
- ② Seal
- ③ Coil

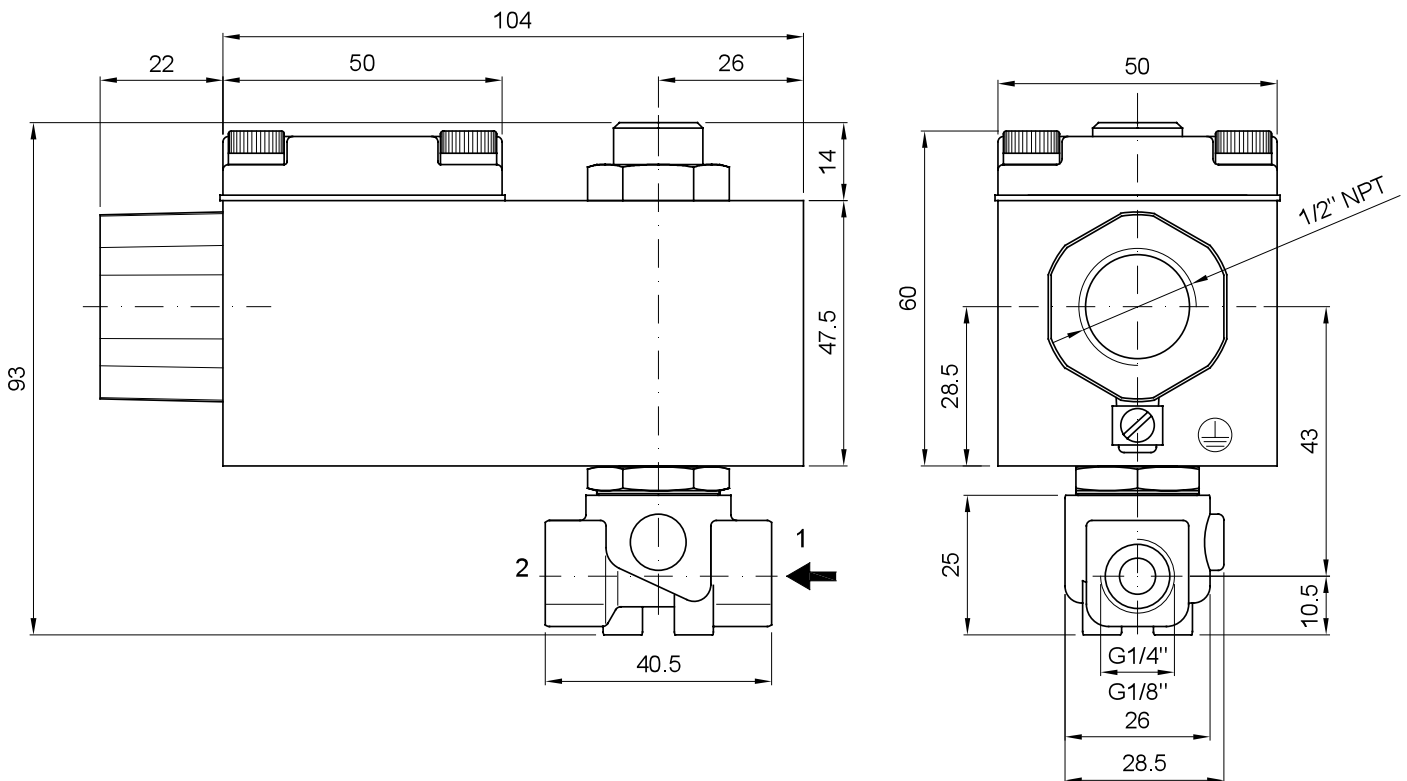
Example: A206BV25///A61 - connections G1/4", FPM seal, orifice Ø2.5mm, 24V DC, alloy housing

COILS ③	Alternating Current 50/60Hz (V)				Direct Current (V)			Electrical connection
	24	48	110	220 230	12	24	48	
Series A6	A6B	A6C	A6D	A6E	A60	A61	A62	1/2" NPT

DESCRIPTION
 Voltage tolerance
 AC +15% -10%
 DC ± 10%
 Protection class IP66
 Continuous service ED100%



OVERALL DIMENSION



DESCRIPTION

Solenoid valve 2 way normally open direct acting poppet type.

With explosion proof coil certified for hazardous area:

ATEX II 2GDEx d IIC T6 or T5 or T4 Gb

Ex tb IIC T80°C or T95°C or T130°C Db IP66

Tamb -40°C ÷ +35°C(T6) or +50°C(T5) or +60°C(T4)

CESI 03 ATEX 344 Extension No. 01/12

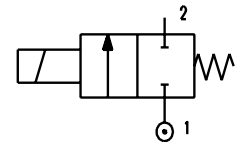
(other certifications e.g.EAC, INMETRO, CCOE etc. on request)



2

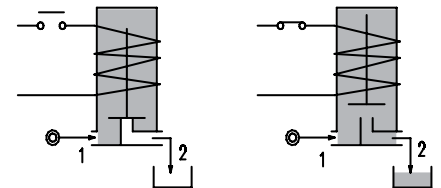
VALVE CONSTRUCTION

Body	Brass
Seal assembly	Brass
Core and plunger	AISI 430FR
Springs	AISI 302
Armature tube	AISI 316
Seal material	NBR - FPM - EPDM



EXPLOSION PROOF COIL CONSTRUCTION

Housing	Red colour alloy (painted with epoxy powder)
Electrical connection	1/2" NPT (M20x1.5 on request)



FEATURES

- Maximum allowable pressure PS 100bar
- Maximum fluid viscosity 25cSt (mm²/s)
- Ambient temperature: -40°C ÷ +35°C(T6), +50°C(T5), +60°C(T4)
- Mounting position with vertical coil above

- OPTIONS:** Stainless steel coil housing (see coil X6 section 8)
 Electroless nickel plating
 Stainless steel seat insert (up to Ø4.5)

NOTE: The solenoid valve is suitable only with media that are **NOT** potentially explosive

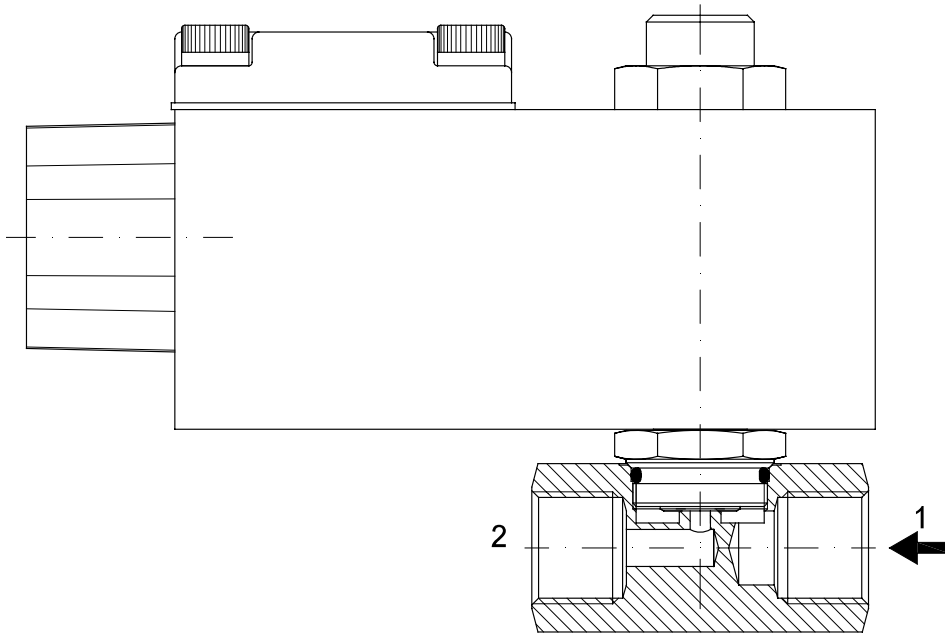
CODE ① ② ③	Connection G ISO 228	Orifice mm	Kv m ³ /h	Differential pressure bar			Nominal power		Coil series	Seal	Temp. range °C
				Min	Max		AC Holding	DC			
					AC	DC					
A206... ..15///...	3/8" 1/2"	1.5	0.07	0	23	23	12 VA	8W	A6	NBR=B EPDM=E FPM=V	-10 +80
A206... ..20///...		2	0.1	0	17	17					
A206... ..25///...		2.5	0.15	0	12	12					
A206... ..30///...		3	0.25	0	9	9					
A206... ..35///...		3.5	0.32	0	7	7					
A206... ..40///...		4	0.36	0	5.5	5.5					
A206... ..45///...		4.5	0.41	0	4.5	4.5					
A206... ..52///...		5.2	0.47	0	3	3					

- ① Connection: C=3/8" , D=1/2"
- ② Seal
- ③ Coil

Example: A206DV35///A60 - connections G1/2", FPM seal, orifice Ø3.5mm, 12V DC, alloy housing

COILS ③	Alternating Current 50/60Hz (V)				Direct Current (V)			Electrical connection
	24	48	110	220 230	12	24	48	
Series A6	A6B	A6C	A6D	A6E	A60	A61	A62	1/2" NPT

DESCRIPTION
 Voltage tolerance
 AC +15% -10%
 DC ± 10%
 Protection class IP66
 Continuous service ED100%



OVERALL DIMENSION

