

DESCRIPTION

Solenoid valve 2 way normally opened with servo-assisted diaphragm.

With explosion proof coil certified for hazardous area:

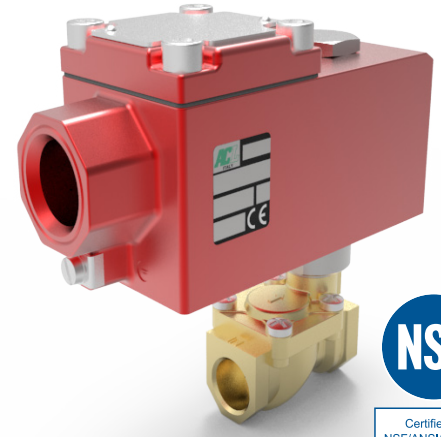
ATEX II 2GDEx d IIC T6 or T5 or T4 Gb IP66

Ex tb IIC T85°C or T100°C or T135°C Db IP66

CESI 03 ATEX 344/02

Tamb -40°C ÷ +35°C(T6) or +50°C(T5) or +60°C(T4)

(other certifications e.g.. EAC, INMETRO, CCOE etc. on request)

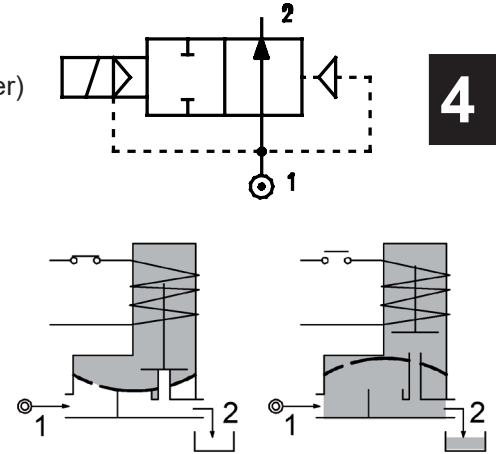


VALVE CONSTRUCTION

Body Brass
Seal material FPM, NBR

EXPLOSION PROOF COIL CONSTRUCTION

Housing Red colour alloy (painted with epoxy powder)
Electrical connection 1/2" NPT (M20x1.5 on request)



FEATURES

Minimum differential pressure 31.5bar
Maximum allowable pressure 362,6bar
Maximum fluid viscosity 25cSt (mm²/s)
Ambient temperature: from -10°C to +80°C according to the coil
Preferred mounting position with vertical coil above

OPTIONS: Electroless nickel-plating
Versions with slow closing diaphragm

CODE ① ②	Connection NPT ISO 228	Orifice mm	Kv m ³ /h	Differential pressure bar			Nominal power		Coil Series	Seal ①	Temp. range °C
				Min	Max AC DC		AC Holding	DC Watt			
A207B...10///...	1/4"	10	1.5	0.15	15	15	12VA	8W	A6	NBR=B EPDM=E FPM=V	-10+80
A207C...10///...	3/8"	10	1.7	0.15	15	15					
A207C...12///...	3/8"	12	2.2	0.15	15	15					
A207D...12///...	1/2"	12	2.5	0.15	15	15					
A207E...18///...	3/4"	18	5.5	0.15	13	13					
A207F...25///...	1"	25	10.2	0.15	10	10					
A207G...30///...	1" 1/4	30	15	0.15	10	10					
③A207C...12/W/...	3/8"	12	2.2	0.5	15	15					
③A207DN...12/W/...	1/2"	12	2.5	0.5	15	15					
E207G...37///...	1"1/4	36.8	18	0.15	10	10					
E207H...37///...	1"1/2	36.8	21	0.15	10	10					
E207I...50///...	2"	48.2	36	0.15	10	10					

① Seal Example: A207DB12///A61 NBR seal
② Coil Coil 24V DC
③ Reinforced diaphragm

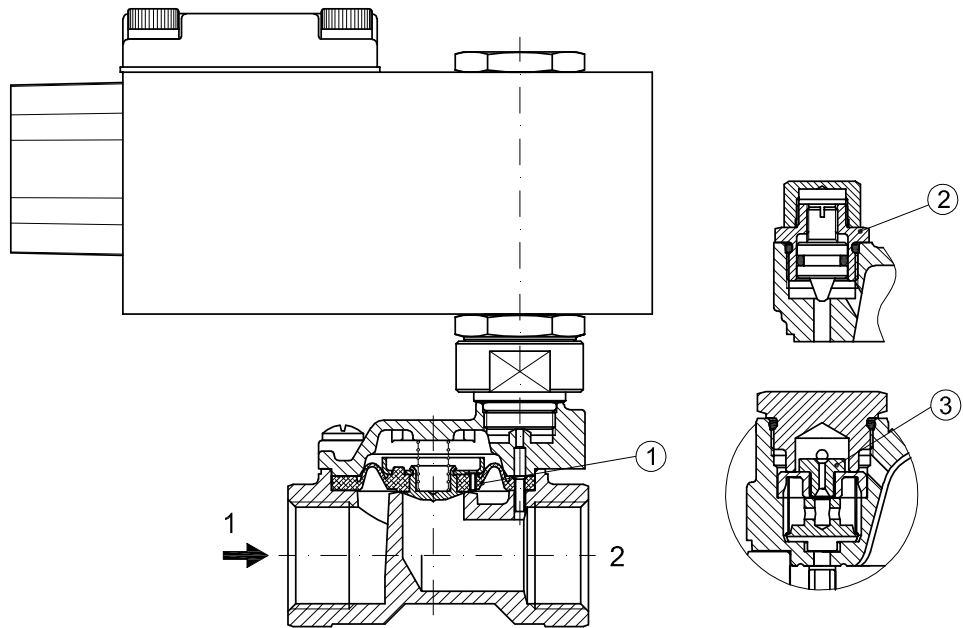
④ The maximum allowable pressure PS for steam 525,04bar (gauge pressure)

COILS ②	Alternating Current 50/60Hz (V)				Direct Current (V)			Electrical connection
	24	48	110	220 230	12	24	48	
Series A6	A6B	A6C	A6D	A6E	A60	A61	A62	1/2" NPT

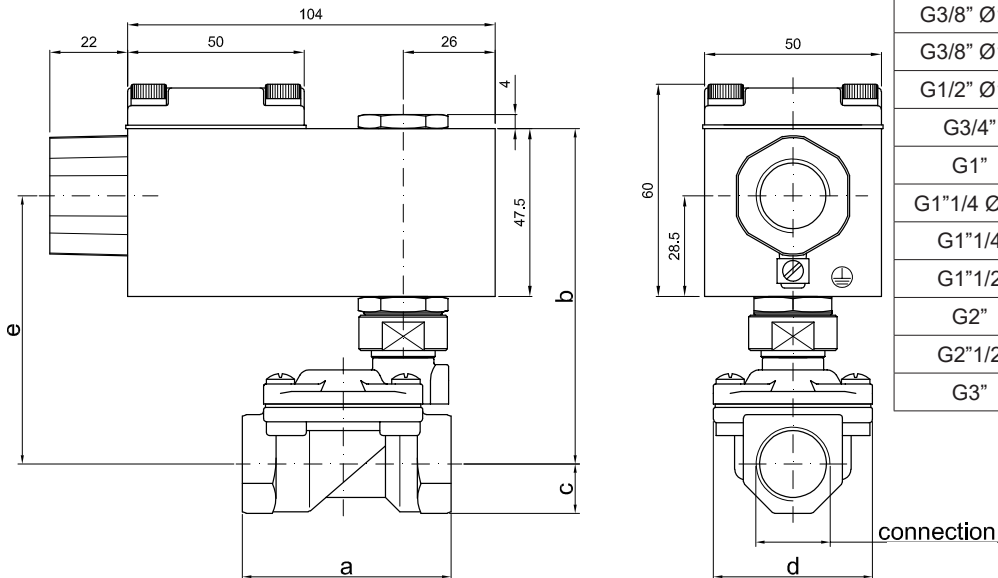
DESCRIPTION
 Voltage tolerance $\pm 10\%$
 Protection class IP66
 Continuous service ED100%

SPARE PARTS LIST

1. Diaphragm assembly
2. Speed control valve
3. Water hammering reducer
 $\varnothing 0.8\text{-}\varnothing 1.2\text{-}\varnothing 1.5$ (G2"1/2-3")



OVERALL DIMENSION



CONNECTION	a	b	c	d	e	weight lb
G1/4" Ø10	49	90	11	32	71	1.58
G3/8" Ø10	49	90	11	32	71	1.58
G3/8" Ø12	59	95	14	45	76	2.02
G1/2" Ø12	59	95	14	45	76	2.02
G3/4"	79	101	18	54	82	2.42
G1"	96	110	20	72	91	3.30
G1"1/4 Ø30	119	118	25	85	99	5
G1"1/4	142	110	28	102	91	7.34
G1"1/2	142	110	28	102	91	6.87
G2"	158	119	35	119	100	10.4
G2"1/2	226	138	51	169	119	22.9
G3"	226	138	51	169	119	22