

**DESCRIPTION**

Solenoid valve 2 way normally open direct acting poppet type in stainless steel AISI 303.

With explosion proof coil certified for hazardous area:

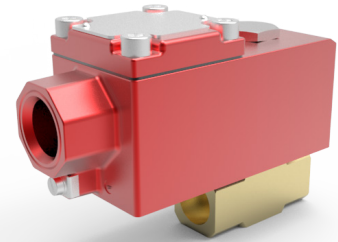
**ATEX II 2GDEx d IIC T6 or T5 or T4 Gb**

**Ex tb IIC T80°C or T95°C or T130°C Db IP66**  
*T176°F or T203°F or T266°F*

**Tamb -40°C ÷ +35°C(T6) or +50°C(T5) or +60°C(T4)**  
*-40°F ÷ +95°F(T6) or +122°F(T5) or +140°F(T4)*

**CESI 03 ATEX 344 Extension No. 01/12**

(other certifications e.g.EAC, INMETRO, CCOE etc. on request)



**2**

**VALVE CONSTRUCTION**

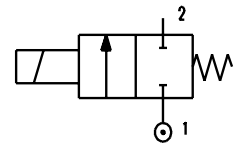
|                  |                  |
|------------------|------------------|
| Body             | AISI 303         |
| Seal assembly    | AISI 303         |
| Core and plunger | AISI 430FR       |
| Springs          | AISI 302         |
| Armature tube    | AISI 316         |
| Seal material    | NBR - FPM - EPDM |



Alloy housing (coil A6)

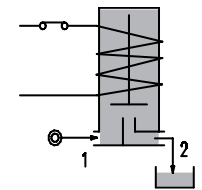
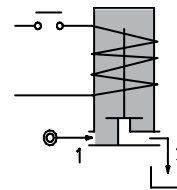


S.Steel housing (coil X6)



**EXPLOSION PROOF COIL CONSTRUCTION**

|                       |  |
|-----------------------|--|
| Housing               | Red colour alloy (coil A6)<br>Stainless steel AISI 316 (coil X6) |
| Electrical connection | 1/2" NPT (M20x1.5 on request)                                    |



**FEATURES**

- Maximum fluid viscosity 25cSt (mm<sup>2</sup>/s)
- Ambient temperature: -40°C ÷ +35°C(T6), +50°C(T5), +60°C(T4)
- Mounting position with vertical coil above

**NOTE:** The solenoid valve is suitable only with media that are **NOT** potentially explosive

| CODE<br>① ② ③       | Port Size<br>NPT  | Orifice Size (mm) | Flow Factor Cv (gpm) | Operating Pressure Differential (M.O.P.D.) ④ |     |     | Nominal power   |        | Coil Series    | Seal ②                   | Temp. range (°C) |
|---------------------|-------------------|-------------------|----------------------|--|-----|-----|-----------------|--------|----------------|--------------------------|------------------|
|                     |                   |                   |                      | Min  | Max |     | AC (VA) Holding | DC (W) |                |                          |                  |
|                     |                   |                   |                      |  | AC  | DC  |                 |        |                |                          |                  |
| A210...N...15///... | 1/4<br>3/8<br>1/2 | 1.5               | 0.08                 | 0  | 23  | 23  | 12              | 8      | A6<br>or<br>X6 | NBR=B<br>FPM=V<br>EPDM=E | -10 +80          |
| A210...N...20///... |                   | 2                 | 0.116                | 0  | 17  | 17  |                 |        |                |                          |                  |
| A210...N...25///... |                   | 2.5               | 0.173                | 0  | 12  | 12  |                 |        |                |                          |                  |
| A210...N...30///... |                   | 3                 | 0.289                | 0  | 9   | 9   |                 |        |                |                          |                  |
| A210...N...35///... |                   | 3.5               | 0.370                | 0  | 7   | 7   |                 |        |                |                          |                  |
| A210...N...40///... |                   | 4                 | 0.416                | 0  | 5.5 | 5.5 |                 |        |                |                          |                  |
| A210...N...45///... |                   | 4.5               | 0.474                | 0  | 4.5 | 4.5 |                 |        |                |                          |                  |
| A210...N...52///... |                   | 5.2               | 0.543                | 0  | 3   | 3   |                 |        |                |                          |                  |

① Connection: B=1/4 NPT, C=3/8 NPT, D=1/2 NPT

② Seal

③ Coil

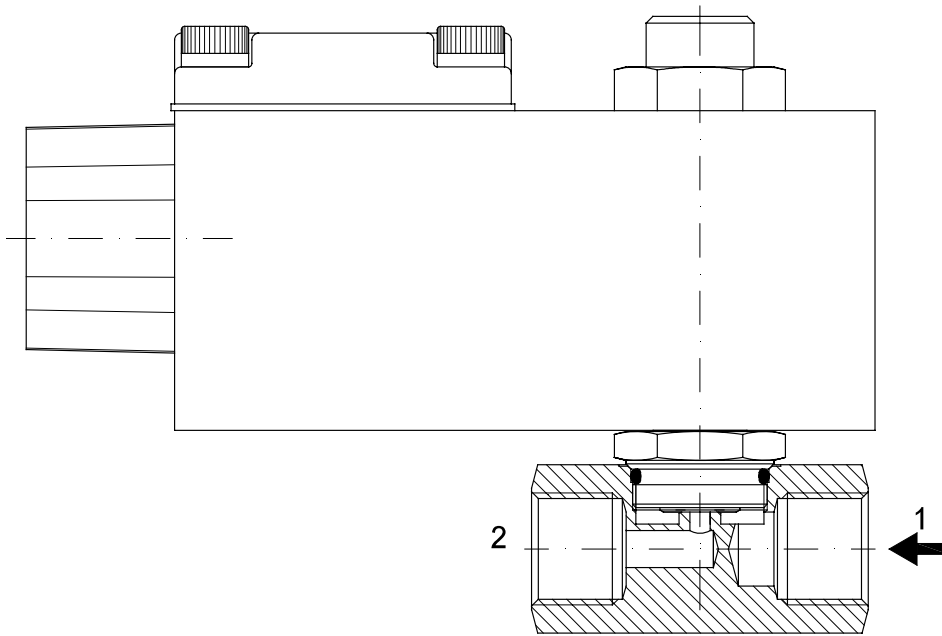
④ Safe Working Pressure: 100 bar. Is the line or system pressure to which the valve may be subjected without being damaged.

Example: A210BNV15///A6B - connections 1/4 NPT, FPM seal, 24V AC, alloy housing

A210CNV15///X6B - connections 3/8 NPT, FPM seal, 24V AC, stainless steel housing

| COILS<br>③                    | Alternating Current 50/60Hz<br>(V) |     |     |            | Direct Current<br>(V) |     |     | Electrical connection |
|-------------------------------|------------------------------------|-----|-----|------------|-----------------------|-----|-----|-----------------------|
|                               | 24                                 | 48  | 110 | 220<br>230 | 12                    | 24  | 48  |                       |
| Series A6<br>alloy housing    | A6B                                | A6C | A6D | A6E        | A60                   | A61 | A62 | 1/2" NPT              |
| Series X6<br>s. steel housing | X6B                                | X6C | X6D | X6E        | X60                   | X61 | X62 |                       |

**DESCRIPTION**  
 Voltage tolerance  
 AC +15% -10%  
 DC ± 10%  
 Protection class IP66  
 Continuous service ED100%



**OVERALL DIMENSION**  
(mm)

