

DESCRIPTION

Solenoid valve 2 way normally open direct acting poppet type in stainless steel AISI 316.

With explosion proof coil certified for hazardous area:

ATEX II 2GDEx d IIC T6 or T5 or T4 Gb

Ex tb IIC T80°C or T95°C or T130°C Db IP66

Tamb -40°C ÷ +35°C(T6) or +50°C(T5) or +60°C(T4)

CESI 03 ATEX 344 Extension No. 01/12

(other certifications e.g.EAC, INMETRO, CCOE etc. on request)



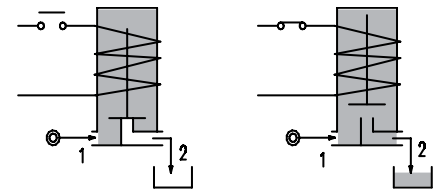
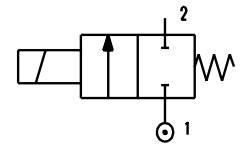
2

VALVE CONSTRUCTION

| | |
|------------------|------------------|
| Body | AISI 316 |
| Seal assembly | AISI 316 |
| Core and plunger | AISI 430FR |
| Springs | AISI 316 |
| Armature tube | AISI 316 |
| Seal material | NBR - FPM - EPDM |

EXPLOSION PROOF COIL CONSTRUCTION

| | |
|-----------------------|--|
| Housing | Red colour alloy (coil A6) Stainless steel AISI 316 (coil X6) |
| Electrical connection | 1/2" NPT (M20x1.5 on request) |



FEATURES

- Maximum allowable pressure PS 100bar
- Maximum fluid viscosity 25cSt (mm²/s)
- Ambient temperature: -40°C ÷ +35°C(T6), +50°C(T5), +60°C(T4)
- Mounting position with vertical coil above

NOTE: The solenoid valve is suitable only with media that are **NOT** potentially explosive

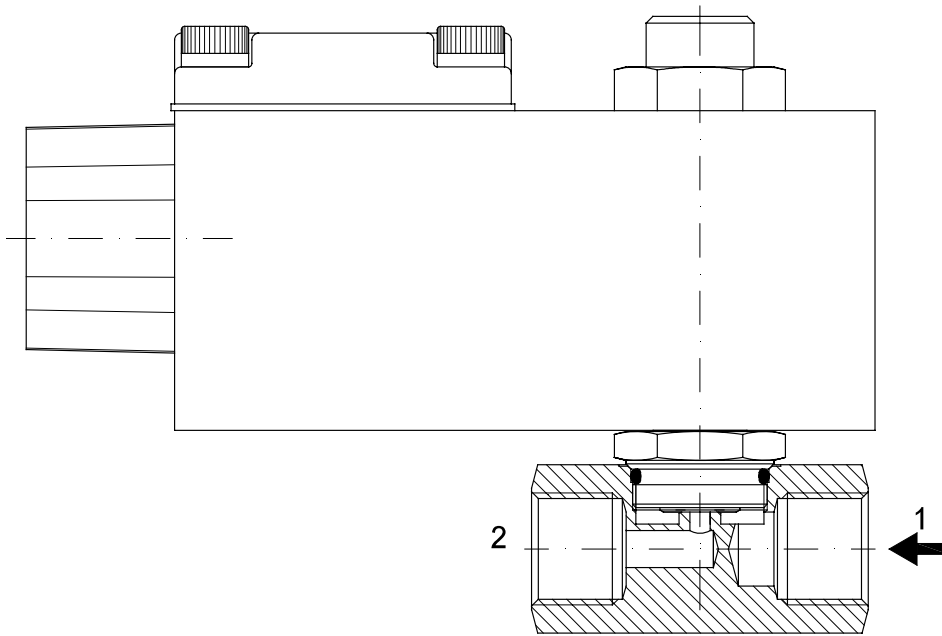
| CODE ① ② ③ | Connection G ISO 228 | Orifice mm | Kv m ³ /h | Differential pressure bar | | | Nominal power | | Coil Series | Seal | Temp. range °C |
|--------------------|----------------------------|---------------|-------------------------|------------------------------|-----|-----|---------------|----|----------------|--------------------------|----------------------|
| | | | | Min | Max | | AC Holding | DC | | | |
| | | | | | AC | DC | | | | | |
| A270... ..15///... | 1/4" | 1.5 | 0.07 | 0 | 23 | 23 | 12 VA | 8W | A6 or X6 | NBR=B EPDM=E FPM=V | -10 +80 |
| A270... ..20///... | | 2 | 0.1 | 0 | 17 | 17 | | | | | |
| A270... ..25///... | | 2.5 | 0.15 | 0 | 12 | 12 | | | | | |
| A270... ..30///... | 3/8" | 3 | 0.25 | 0 | 9 | 9 | | | | | |
| A270... ..35///... | 1/2" | 3.5 | 0.32 | 0 | 7 | 7 | | | | | |
| A270... ..40///... | | 4 | 0.36 | 0 | 5.5 | 5.5 | | | | | |
| A270... ..45///... | | 4.5 | 0.41 | 0 | 4.5 | 4.5 | | | | | |

- ① Connection: B=1/4", C=3/8", D=1/2"
- ② Seal
- ③ Coil

Example: A270CV25///A6B - connections G3/8", FPM seal, orifice Ø2.5mm, 24V AC, alloy housing
A270BV25///X61 - connections G1/4", FPM seal, orifice Ø2.5mm, 24V DC, stainless steel housing

| COILS ③ | Alternating Current 50/60Hz (V) | | | | Direct Current (V) | | | Electrical connection |
|------------------------------|------------------------------------|-----|-----|------------|-----------------------|-----|-----|-----------------------|
| | 24 | 48 | 110 | 220 230 | 12 | 24 | 48 | |
| Series A6 alloy housing | A6B | A6C | A6D | A6E | A60 | A61 | A62 | 1/2" NPT |
| Series X6 s.steel housing | X6B | X6C | X6D | X6E | X60 | X61 | X62 | |

DESCRIPTION
 Voltage tolerance
 AC +15% -10%
 DC ± 10%
 Protection class IP66
 Continuous service ED100%



OVERALL DIMENSION

The data in brackets refer to the X6 series coil ...

